

Sign Type MN3- Large Horizontal Monument (S/F) (III)
SCALE: 1/2" = 1'-0"

Side View
SCALE: 1/2" = 1'-0"

PAINT COLORS:

P1 MP 14571 Shimmer Gold Metallic Glossy Finish



P2 MAP to match PMS 2405C Satin Finish



P3 MAP to match PMS 2597C Satin Finish



P4 MAP to match PMS 630C Satin Finish



P5 MAP to match PMS 414C Satin Finish



P6 MP 59647 Black is Back Satin Finish



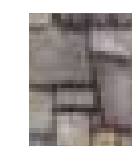
TEXTURE FINISHES:

T1 Heavy Stucco Texture



MATERIAL FINISHES:

M1 ELDORADO Andante Fieldledge Stone Veneer



CREATIVE SIGN DESIGNS

CONSULT. DESIGN. FABRICATE. INSTALL.

12801 Commodity Place
Tampa, Florida 33626

Phone: 813-818-7100
Fax: 813-749-2311

www.creativesigndesigns.com

PROJECT:

W192 Development Authority

SITE ADDRESS

Kissimmee, FL

CRM / Quote:

14219-52993

Account Manager:

LDM

Project Manager / PSC

AG

Designer:

MW

Date:

1/18/16

Revision:

No.	Date	Description
01	-	-
02		
03		
04		



ALL ELECTRICAL COMPONENTS WILL BE UL LISTED AND APPROVED AS PER 2011 NEC 600.3 AND MARKED AS PER NEC 600.4. THE INSTALLATION OF THE WIRING WILL BE DONE AS PER FBC 4505.4 AND DESIGNATED TO UL 48. ALL SIGNS ARE TO BE GROUNDED AND BONDED PER NEC 600.7 AND 250.122. AN ELECTRICAL DISCONNECT WILL BE PROVIDED PER NEC 600.6

ALL WIRING INSIDE LETTERING WILL BE LOW VOLTAGE UNDER UL SIGN ACCESSORIES MANUAL (SAM) E242084, LISTED AND APPROVED AS PER 2011 NEC 600.3 AND MARKED PER NEC 600.4. PRIMARY ELECTRICAL SOURCE TO BE SUPPLIED BY CUSTOMER WITHIN SIX (6) FEET OF SIGN. ALL PRIMARY WIRING WILL BE #12 THWN. THIS SIGN IS A UL LISTED ASSEMBLY PER NEC 600.3

Approval:

- Approved
- Approved as noted
- Revise and resubmit

Approved: _____

Date: _____

This Drawing and all reproductions thereof are the property of Creative Sign Designs and may not be reproduced, published, changed or used in any way without written consent.

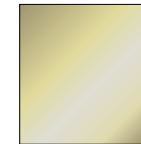
SHEET
MN3a

File Name:
14219-52993 W192 ST-MN3a Large Horiz Color.ai

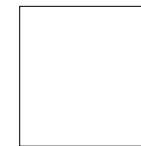
NOTE: THIS COLOR SCHEME APPLIED TO ALL SIGN TYPES WITHING THE CELEBRATION DISTRICT.

PAINT COLORS:

P1 MP 14571 Shimmer Gold Metallic Glossy Finish



P9 MAP White Satin Finish



P7 MAP to match PMS 2597C Satin Finish



P8 MAP to match PMS 569C Satin Finish



P5 MAP to match PMS 414C Satin Finish



P6 MP 59647 Black is Back Satin Finish



TEXTURE FINISHES:

T1 Heavy Stucco Texture



MATERIAL FINISHES:

M1 ELDORADO Andante Fieldledge Stone Veneer



CREATIVE SIGN DESIGNS

CONSULT. DESIGN. FABRICATE. INSTALL.

12801 Commodity Place
Tampa, Florida 33626

Phone: 813-818-7100
Fax: 813-749-2311

www.creativesigndesigns.com

PROJECT:

W192 Development Authority

SITE ADDRESS

Kissimmee, FL

CRM / Quote:

14219-52993

Account Manager:

LDM

Project Manager / PSC

AG

Designer:

MW

Date:

1/18/16

Revision:

No.	Date	Description
01	-	-
02		
03		
04		



ALL ELECTRICAL COMPONENTS WILL BE UL LISTED AND APPROVED AS PER 2011 NEC 600.3 AND MARKED AS PER NEC 600.4. THE INSTALLATION OF THE WIRING WILL BE DONE AS PER FBC 4505.4 AND DESIGNATED TO UL 48. ALL SIGNS ARE TO BE GROUNDED AND BONDED PER NEC 600.7 AND 250.122. AN ELECTRICAL DISCONNECT WILL BE PROVIDED PER NEC 600.6

ALL WIRING INSIDE LETTERING WILL BE LOW VOLTAGE UNDER UL SIGN ACCESSORIES MANUAL (SAM) E242084, LISTED AND APPROVED AS PER 2011 NEC 600.3 AND MARKED PER NEC 600.4. PRIMARY ELECTRICAL SOURCE TO BE SUPPLIED BY CUSTOMER WITHIN SIX (6) FEET OF SIGN. ALL PRIMARY WIRING WILL BE #12 THWN. THIS SIGN IS A UL LISTED ASSEMBLY PER NEC 600.3

Approval:

- Approved
- Approved as noted
- Revise and resubmit

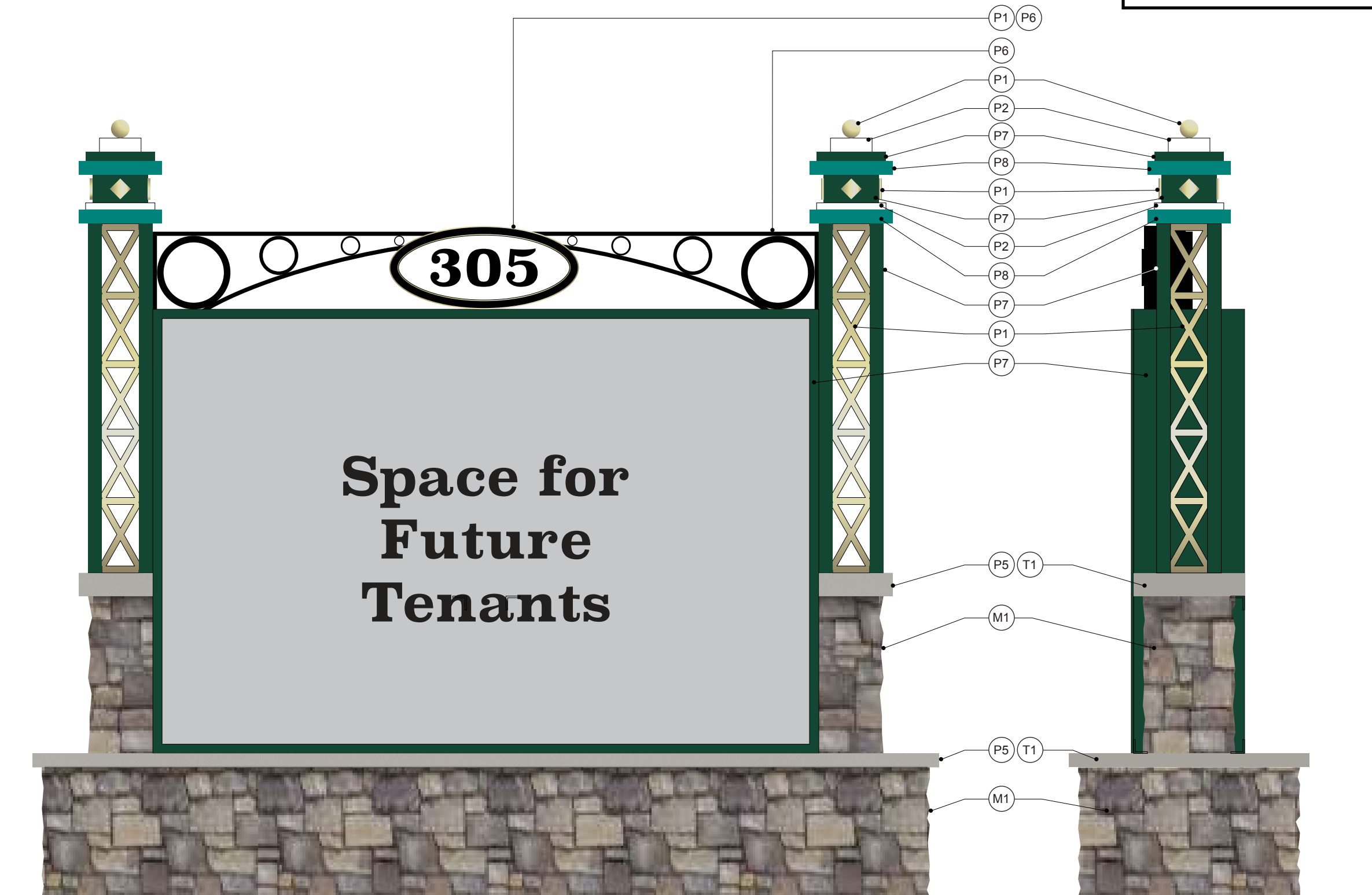
Approved: _____

Date: _____

This Drawing and all reproductions thereof are the property of Creative Sign Designs and may not be reproduced, published, changed or used in any way without written consent.

SHEET MN5

File Name:
14219-52993 W192 ST-MN5 Horiz Color.ai

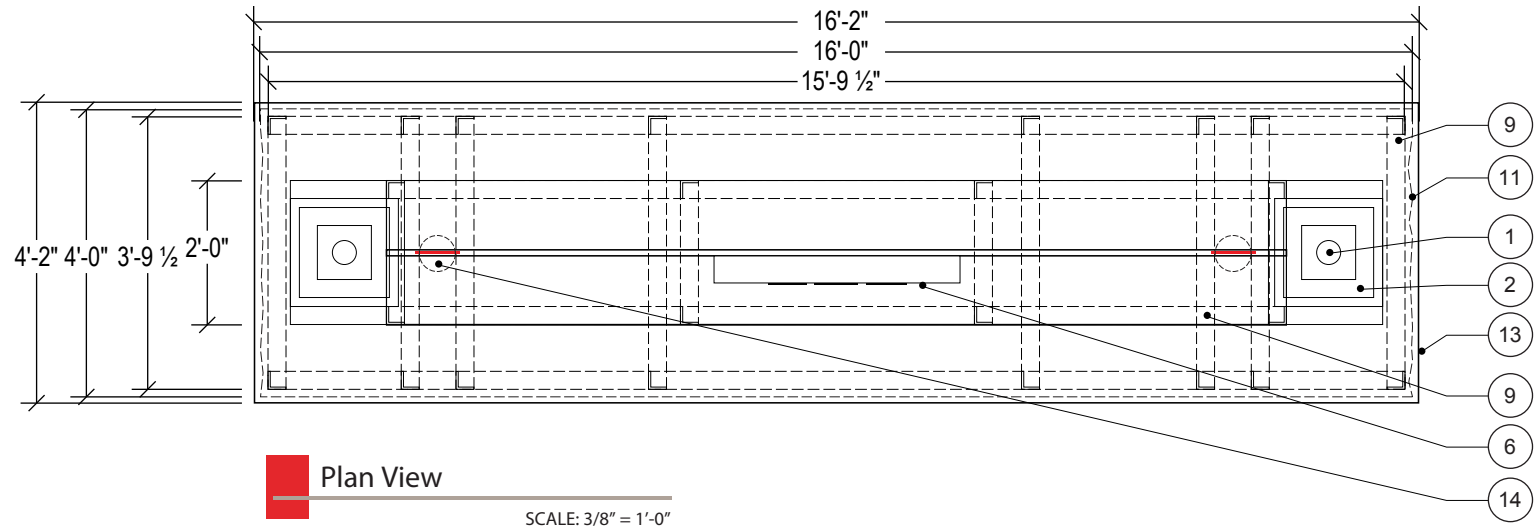


Sign Type MN1- Horizontal Monument (S/F) (III)

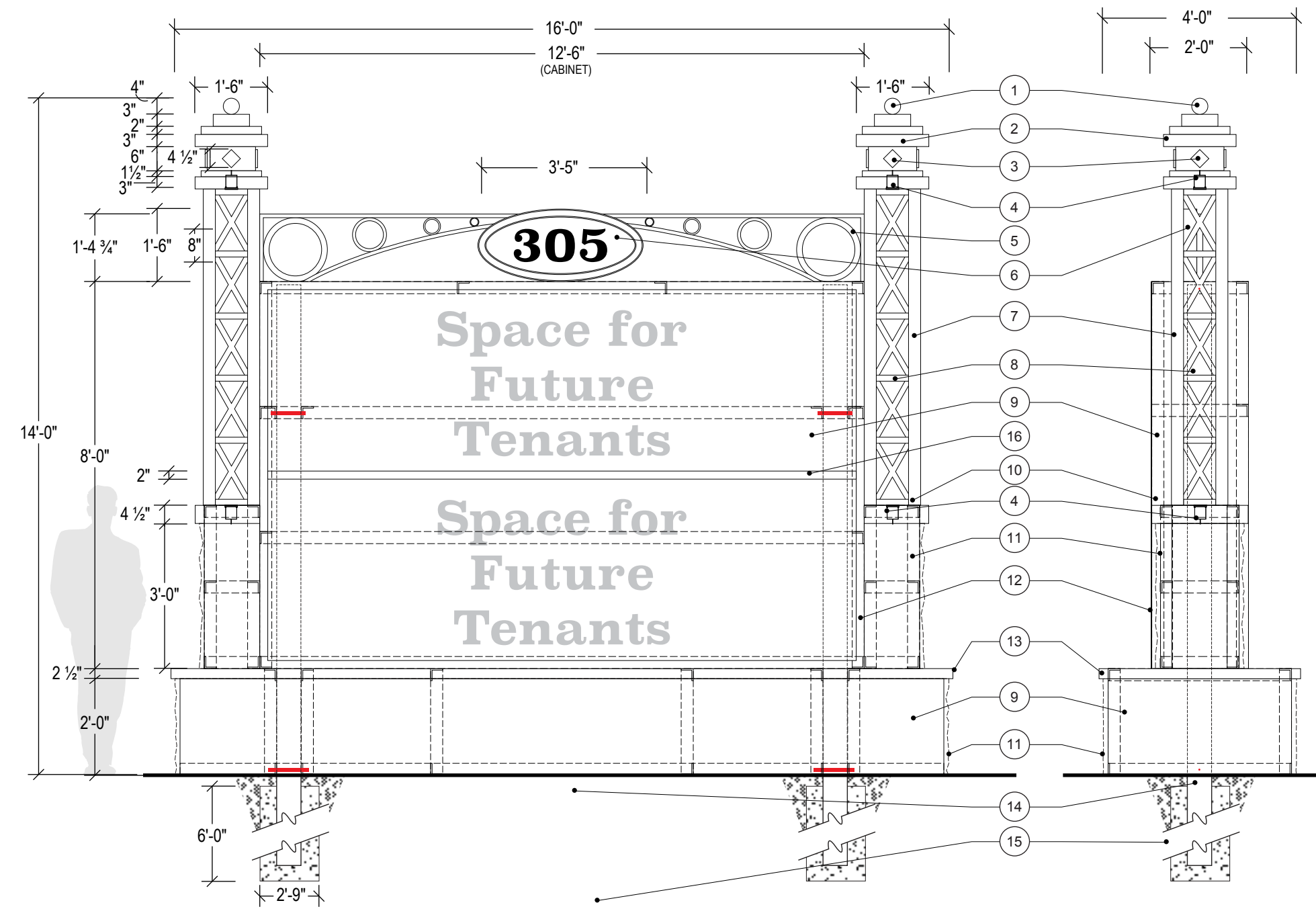
SCALE: 1" = 1'-0"

Side View

SCALE: 1" = 1'-0"



Plan View
SCALE: 3/8" = 1'-0"



Side View
SCALE: 3/8" = 1'-0"

Sign Type MN3- Large Horizontal Monument (S/F) (III)
SCALE: 3/8" = 1'-0"

NOTES:

- 1) 4" round aluminum finial mounted flush to fabricated aluminum cap with threaded stud and nut. Finial painted with gloss finish.
- 2) Fabricated aluminum column cap from 1 1/2", 2" and 3" aluminum tubing, full welded with 1/8" thick aluminum mid section, full welded to tubing.
- 3) 1/4" thick decorative acrylic diamond accent painted with gloss finish. Acrylic bonded flush to column cap.
- 4) White LED in ground well light fixture for down and uplighting. Fixture concealed inside top and bottom of column feature.
- 5) 1/2" thick waterjet cut aluminum circles welded to 3/4" square aluminum tube frame. Tube frame welded to top of aluminum cabinet and mechanically fastened to column feature with #8 flat head fasteners, as required.
- 6) 4 1/2" deep fabricated aluminum address display with #7328, 3/16" white translucent face. 1/4" thick flat cut out acrylic address numerals bonded to acrylic face. Letters painted MP Black with satin finish. Display mounted flush to top aluminum frame accent with threaded studs and nuts welded to interior of display.
- 7) 3" square aluminum tube (x4) supports welded to 1/4" thick square aluminum plate (top). Aluminum plate mechanically fastened to top column cap with #8 flat head fasteners as required. Tube welded to returns of cabinet and bottom column accent.
- 8) 1/4" thick flat cut out aluminum criss-cross accent welded to aluminum tube columns (3 sides full - 1 side partial at top).
- 9) Fabricated aluminum cabinet with 1 1/2" x 1 1/2" x 3/16" aluminum angle (full weld) with .080" aluminum face, returns and back. (face removeable for access and changeable tenant options).
- 10) 2 1/2" x 1/8" square aluminum tube accent with heavy stucco finish.
- 11) Nominal 1 1/4" thick ELDORADO Andante Fieldledge stone veneer applied to columns and base.
- 12) 1/8" thick aluminum frame mounted flush to cabinet face with #8 flat head fasteners as required.
- 13) 2 1/2" x 1/8" square aluminum tube accent with heavy stucco finish.
- 14) 6" schd 40 aluminum (6061-T6) pipe (x2) secured to cabinet with 1/2" thru-bolt (x2).
- 15) 33" dia. x 72" deep 3000 PSI concrete footer.
- 16) 1/8" thick aluminum divider bar bonded to aluminum face.



12801 Commodity Place
Tampa, Florida 33626
Phone: 813-818-7100
Fax: 813-749-2311
www.creativesigndesigns.com

PROJECT:
W192 Development Authority

SITE ADDRESS:
Kissimmee, FL

CRM / Quote:
14219-52993

Account Manager:
LDM
Project Manager / PSC
AG

Designer: MW
Date: 1/18/16

Revision:

No.	Date	Description
01	-	-
02		
03		
04		



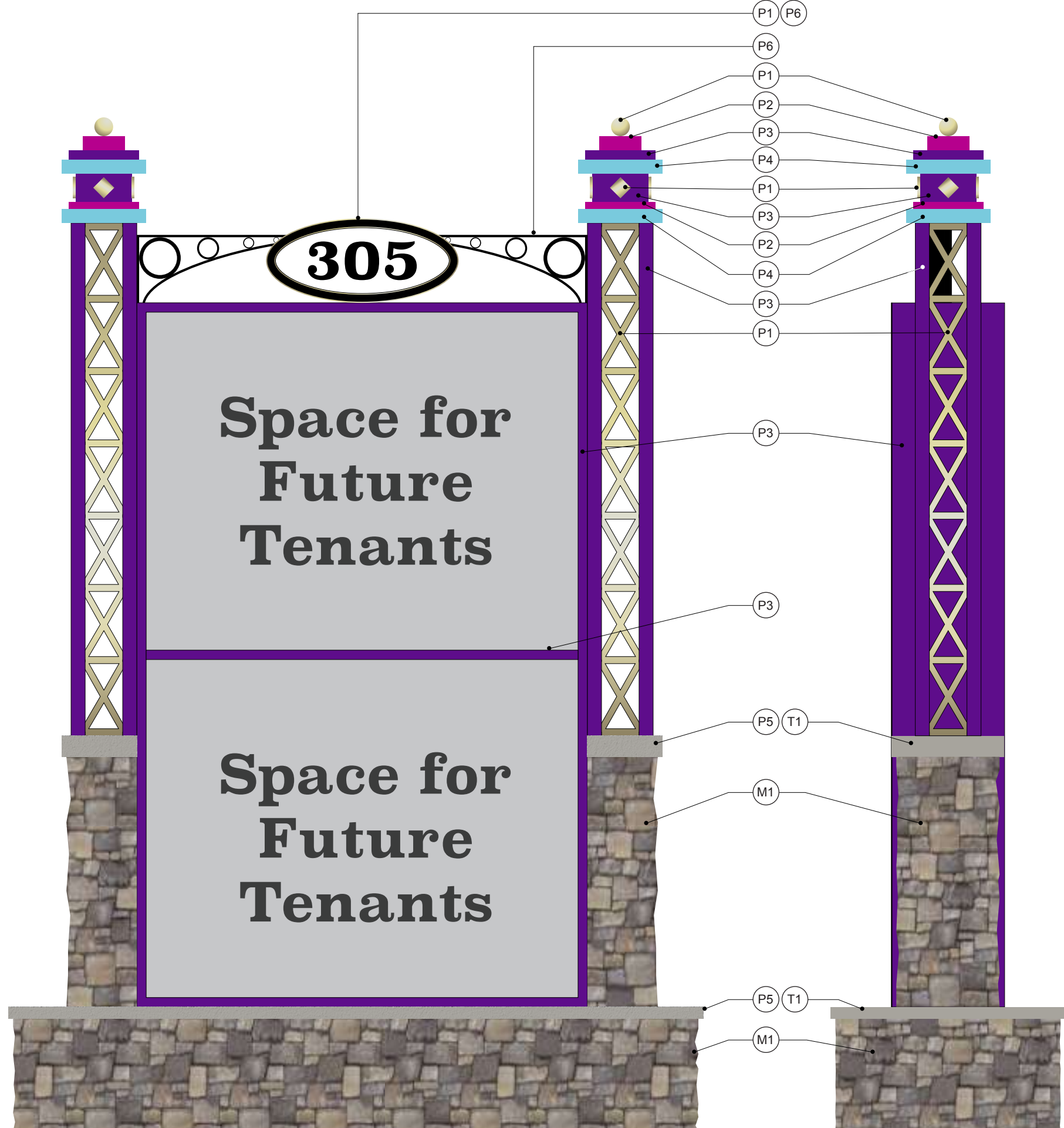
ALL ELECTRICAL COMPONENTS WILL BE UL LISTED AND APPROVED AS PER 2011 NEC 600.3 AND MARKED AS PER NEC 600.4. THE INSTALLATION OF THE WIRING WILL BE DONE AS PER FBC 4505.4 AND DESIGNATED TO UL 48. ALL SIGNS ARE TO BE GROUNDED AND BONDED PER NEC 600.7 AND 250.122. AN ELECTRICAL DISCONNECT WILL BE PROVIDED PER NEC 600.6
ALL WIRING INSIDE LETTERING WILL BE LOW VOLTAGE UNDER UL SIGN ACCESSORIES MANUAL (SAM) E242084, LISTED AND APPROVED AS PER 2011 NEC 600.3 AND MARKED PER NEC 600.4.
PRIMARY ELECTRICAL SOURCE TO BE SUPPLIED BY CUSTOMER WITHIN SIX (6) FEET OF SIGN. ALL PRIMARY WIRING WILL BE #12 THWN.
THIS SIGN IS A UL LISTED ASSEMBLY PER NEC 600.3

Approval:
 Approved
 Approved as noted
 Revise and resubmit
Approved: _____
Date: _____

This Drawing and all reproductions thereof are the property of Creative Sign Designs and may not be reproduced, published, changed or used in any way without written consent.

SHEET
MN3b







File Name:
14219-52993 W192 ST-MN3b Large Horiz.ai




Sign Type MN4- Vert. Mon. (S/F) (III)
SCALE: 1/2" = 1'-0"

Side View
SCALE: 1/2" = 1'-0"

PAINT COLORS:

- P1 MP 14571 Shimmer Gold Metallic Glossy Finish 
- P2 MAP to match PMS 2405C Satin Finish 
- P3 MAP to match PMS 2597C Satin Finish 
- P4 MAP to match PMS 630C Satin Finish 
- P5 MAP to match PMS 414C Satin Finish 
- P6 MP 59647 Black is Back Satin Finish 

TEXTURE FINISHES:

- T1 Heavy Stucco Texture 

MATERIAL FINISHES:

- M1 ELDORADO Andante Fieldledge Stone Veneer 



CREATIVE SIGN DESIGNS

CONSULT. DESIGN. FABRICATE. INSTALL.

12801 Commodity Place
Tampa, Florida 33626
Phone: 813-818-7100
Fax: 813-749-2311
www.creativesigndesigns.com

PROJECT:
W192 Development Authority

SITE ADDRESS:
Kissimmee, FL

CRM / Quote:
14219-52993

Account Manager:
LDM
Project Manager / PSC
AG

Designer: MW Date: 1/18/16

Revision:

No.	Date	Description
01	-	-
02		
03		
04		



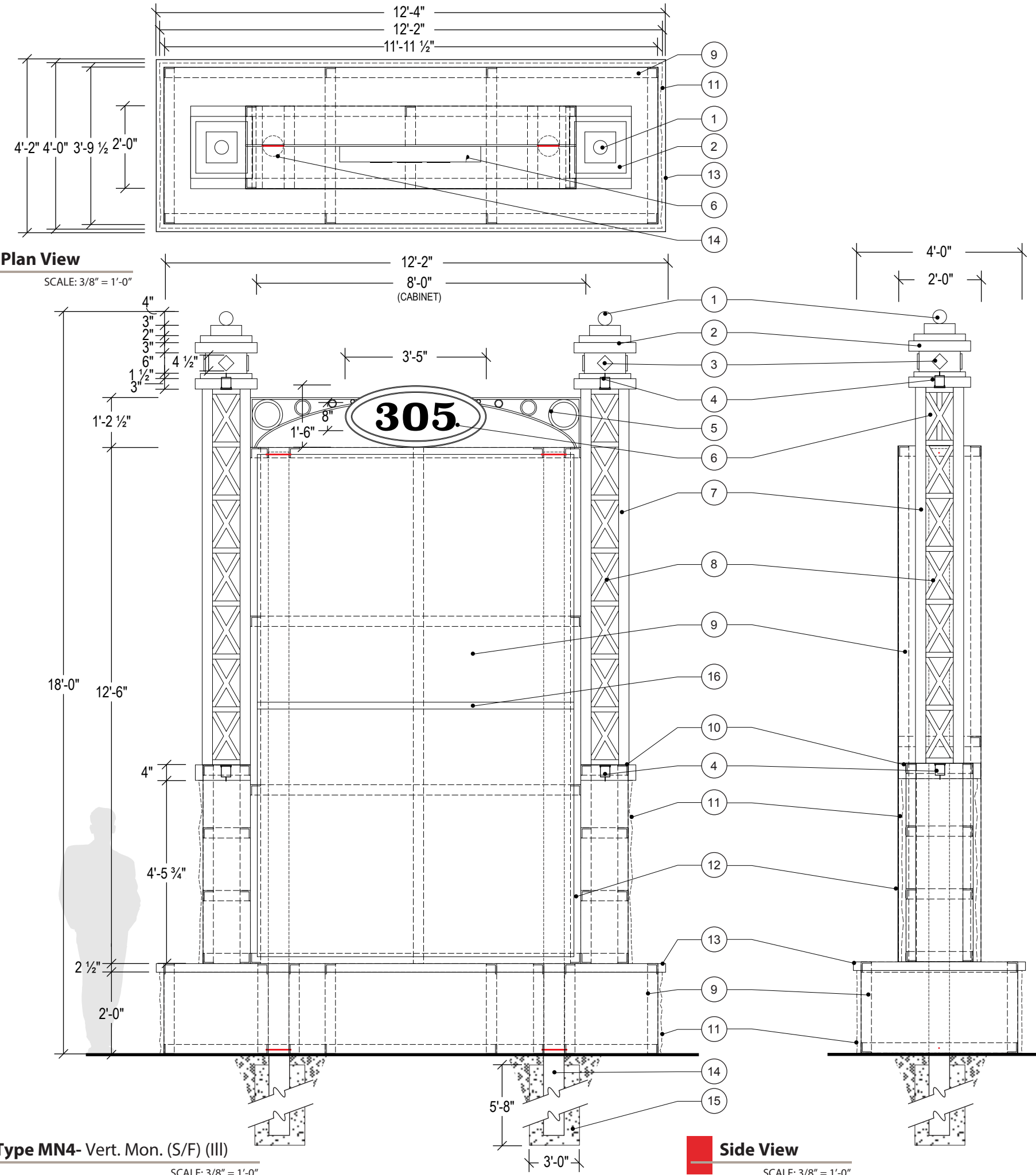
ALL ELECTRICAL COMPONENTS WILL BE UL LISTED AND APPROVED AS PER 2011 NEC 600.3 AND MARKED AS PER NEC 600.4. THE INSTALLATION OF THE WIRING WILL BE DONE AS PER FBC 4505.4 AND DESIGNATED TO UL 48. ALL SIGNS ARE TO BE GROUNDED AND BONDED PER NEC 600.7 AND 250.122. AN ELECTRICAL DISCONNECT WILL BE PROVIDED PER NEC 600.6
ALL WIRING INSIDE LETTERING WILL BE LOW VOLTAGE UNDER UL SIGN ACCESSORIES MANUAL (SAM) E242084, LISTED AND APPROVED AS PER 2011 NEC 600.3 AND MARKED PER NEC 600.4.
PRIMARY ELECTRICAL SOURCE TO BE SUPPLIED BY CUSTOMER WITHIN SIX (6) FEET OF SIGN. ALL PRIMARY WIRING WILL BE #12 THWN.
THIS SIGN IS A UL LISTED ASSEMBLY PER NEC 600.3

Approval:
 Approved
 Approved as noted
 Revise and resubmit
Approved: _____
Date: _____

This Drawing and all reproductions thereof are the property of Creative Sign Designs and may not be reproduced, published, changed or used in any way without written consent.

SHEET
MN4a

File Name:
14219-52993 W192 ST-MN4a Large Vert Color.ai



Plan View

SCALE: 3/8" = 1'-0"

Side View

SCALE: 3/8" = 1'-0"

Sign Type MN4- Vert. Mon. (S/F) (III)

SCALE: 3/8" = 1'-0"

NOTES:

- 1) 4" round aluminum finial mounted flush to fabricated aluminum cap with threaded stud and nut. Finial painted with gloss finish.
- 2) Fabricated aluminum column cap from 1 1/2", 2" and 3" aluminum tubing, full welded with 1/8" thick aluminum mid section, full welded to tubing.
- 3) 1/4" thick decorative acrylic diamond accent painted with gloss finish. Acrylic bonded flush to column cap.
- 4) White LED in ground well light fixture for down and uplighting. Fixture concealed inside top and bottom of column feature.
- 5) 1/2" thick waterjet cut aluminum circles welded to 1/2" square aluminum tube frame. Tube frame welded to top of aluminum cabinet and mechanically fastened to column feature with #8 flat head fasteners, as required.
- 6) 4 1/2" deep fabricated aluminum address display with #7328, 3/16" white translucent face. 1/4" thick flat cut out acrylic address numerals bonded to acrylic face. Letters painted MP Black with satin finish. Display mounted flush to top aluminum frame accent with threaded studs and nuts welded to interior of display.
- 7) 3" square aluminum tube (x4) supports welded to 1/4" thick square aluminum plate (top). Aluminum plate mechanically fastened to top column cap with #8 flat head fasteners as required. Tube welded to returns of cabinet and bottom column accent.
- 8) 1/4" thick flat cut out aluminum criss-cross accent welded to aluminum tube columns (3 sides full - 1 side partial at top).
- 9) Fabricated aluminum cabinet with 1 1/2" x 1 1/2" x 3/16" aluminum angle (full weld) with .080" aluminum face, returns and back. (face removeable for access and changeable tenant options).
- 10) 4" x 1/8" square aluminum tube accent with heavy stucco finish.
- 11) Nominal 1 1/4" thick ELDORADO Andante Fieldledge stone veneer applied to columns and base.
- 12) 1/8" thick aluminum frame mounted flush to cabinet face with #8 flat head fasteners as required.
- 13) 2 1/2" x 1/8" square aluminum tube accent with heavy stucco finish.
- 14) 6" schd 40 aluminum (6061-T6) pipe (x2) secured to cabinet with 1/2" thru-bolt (x2).
- 15) 36" dia. x 68" deep 3000 PSI concrete footer.
- 16) 1/8" thick aluminum divider bar bonded to aluminum face.



CREATIVE SIGN DESIGNS

CONSULT. DESIGN. FABRICATE. INSTALL.

12801 Commodity Place
Tampa, Florida 33626

Phone: 813-818-7100
Fax: 813-749-2311

www.creativesigndesigns.com

PROJECT:

W192 Development Authority

SITE ADDRESS

Kissimmee, FL

CRM / Quote:

14219-52993

Account Manager:

LDM

Project Manager / PSC

AG

Designer:

MW

Date:

1/18/16

Revision:

No.	Date	Description
01	-	-
02		
03		
04		



ALL ELECTRICAL COMPONENTS WILL BE UL LISTED AND APPROVED AS PER 2011 NEC 600.3 AND MARKED AS PER NEC 600.4. THE INSTALLATION OF THE WIRING WILL BE DONE AS PER FBC 4505.4 AND DESIGNATED TO UL 48. ALL SIGNS ARE TO BE GROUNDED AND BONDED PER NEC 600.7 AND 250.122. AN ELECTRICAL DISCONNECT WILL BE PROVIDED PER NEC 600.6

ALL WIRING INSIDE LETTERING WILL BE LOW VOLTAGE UNDER UL SIGN ACCESSORIES MANUAL (SAM) E242084, LISTED AND APPROVED AS PER 2011 NEC 600.3 AND MARKED PER NEC 600.4. PRIMARY ELECTRICAL SOURCE TO BE SUPPLIED BY CUSTOMER WITHIN SIX (6) FEET OF SIGN. ALL PRIMARY WIRING WILL BE #12 THWN. THIS SIGN IS A UL LISTED ASSEMBLY PER NEC 600.3

Approval:

- Approved
- Approved as noted
- Revise and resubmit

Approved:

Date:

This Drawing and all reproductions thereof are the property of Creative Sign Designs and may not be reproduced, published, changed or used in any way without written consent.

SHEET MN4b

File Name:
14219-52993 W192 ST-MN4b Large Vert.ai